



**COLOUR
STUDIOS**

PART OF THE



EVENT & EXHIBITION

THE EXPERTS IN SUSTAINABLE EXHIBITION & PRODUCT DISPLAY.

CREATING DISPLAYS SINCE 1982.

We design and deliver bespoke display solutions for retail, exhibitions, and events. Prioritising your brand identity and audience impact.

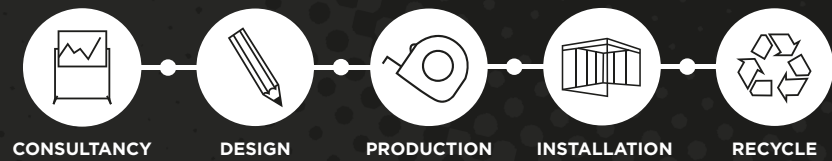
With a strong focus on sustainable sourcing and responsible production, our displays are built to perform, impress, and align with your environmental and commercial objectives.



CONTENTS

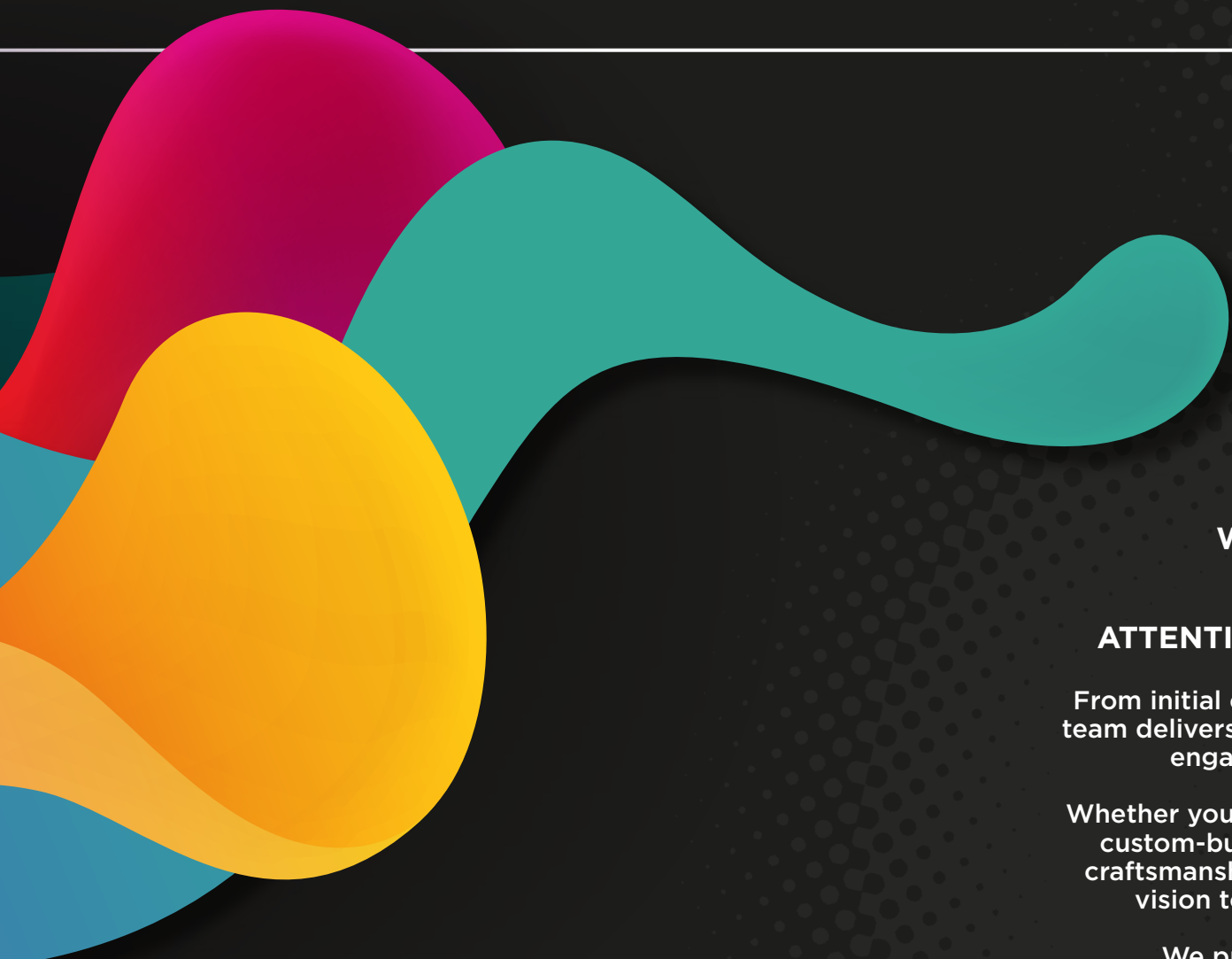
EVENTS & EXHIBITIONS	3-8
POP-UP DISPLAYS	9-17
DUMP BINS	18
FURNITURE	19-20
DISPLAY UNITS	21-24
BESPOKE DESIGN SERVICES	25-27
ACCREDITATIONS	28
TESTIMONIALS	29

OUR PROCESS



EVENT & EXHIBITION

**WHERE
INNOVATION
MEETS EXHIBITION
EXCELLENCE.**



**WE TRANSFORM CONCEPTS INTO
CUTTING-EDGE EXHIBITION
ENVIRONMENTS THAT CAPTURE
ATTENTION AND SPARK CONVERSATION.**

From initial concept to full build and installation, our team delivers bespoke stands that reflect your brand, engage your audience, and maximise impact.

Whether you need modular, reusable systems or fully custom-built environments, we combine creativity, craftsmanship, and practical expertise to bring your vision to life. On time, on brand, and on budget.

We provide a comprehensive range of display solutions including Shell Clad systems, fabric graphics, flexible banners, pop-ups, and bespoke space-only stands, each thoughtfully designed to leave a lasting impression and elevate your brand presence.

CUSTOM STAND DESIGN

TAILORED DESIGN. UNFORGETTABLE IMPACT.

We offer a fully bespoke exhibition service tailored to your brand, objectives, and audience.

From initial concept development to final installation, our team works closely with you to design and deliver high-impact stands that bring your vision to life.

Whether you're looking for bold creativity, functional innovation, or sustainable solutions, we combine expert design, intelligent planning, and premium materials to create spaces that truly stand out.

Many of our builds are designed with reuse in mind, allowing key elements to be re-purposed for future events, reducing waste and delivering long-term value for your brand.



EXHIBITION STANDS

SHELL CLAD

Shell Clad transforms standard shell scheme walls into seamless, full graphic displays.

Using a simple clip system, it allows for high impact visuals without visible panel joins, turning basic structures into professional, brand led spaces.

It's a cost effective, reusable solution ideal for elevating presence within pre-built exhibition spaces.

FLEXIBANNER

Designed for simplicity, portability, and professional results, our FlexiBanners are an ideal solution for shell scheme spaces.

Made from PVC free material, the banners are designed to hook over the top of a shell scheme structure, the graphics roll neatly between the poles and feature a weighted base to ensure a smooth, flat finish.

Our team will create a visually striking display that reflects your brand identity with precision.



BANNER SIZE: 940mm (W) x 2460mm (H)

EXHIBITION SERVICES

FROM BUILD TO DE-RIG, OUR TEAM HANDLES IT ALL, ENSURING A SMOOTH EXPERIENCE FROM START TO FINISH.

We offer a full service approach to support your exhibition and event needs from start to finish. Our experienced team provides expert design, end-to-end project management, on site installation, and secure storage between events ensuring your display is set up professionally, safely, and on time, every time. With the flexibility to work across a wide range of venues, time lines, and formats, we bring your display to life exactly as intended, giving you peace of mind and a flawless finish wherever your brand appears. Every detail is taken care of, so your brand is always presented at its best, wherever you go.



EXHIBITION,
EVENT OR
BESPOKE
EVENT, WE
MANAGE IT
ALL!



POS & POP-UP

**WHERE
CREATIVITY
MEETS EFFORTLESS
SOLUTIONS.**



**SMART. LIGHTWEIGHT.
LOW IMPACT.**

Make an impact without leaving one behind. Our custom cardboard POS and pop-up solutions are designed to turn heads, spark engagement, and align perfectly with your sustainability goals.

Crafted from responsibly sourced, fully recyclable materials, these displays are lightweight, easy to assemble, and fully brandable.

These products are ideal for exhibitions, retail environments, and on-the-go promotions.

Whether you need countertop units, floor stands, or immersive product showcases, we combine bold design with environmentally conscious thinking.

Good for your brand. Even better for the planet.

edie

Empowering sustainable business



www.edie.net

@edie | edie

DISPLAY WALLS

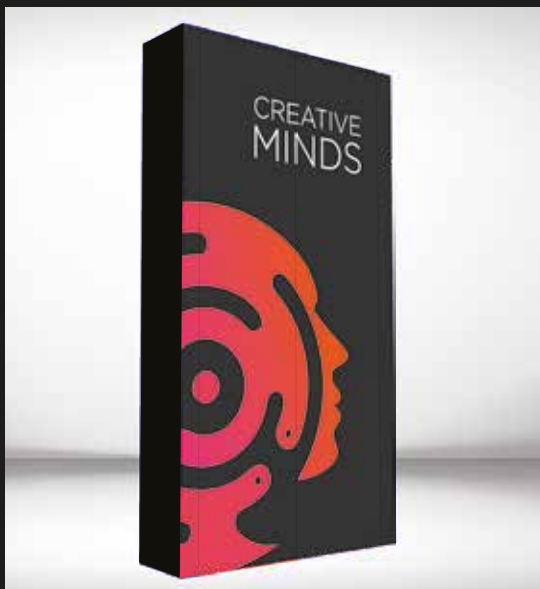
POP UP WITH PURPOSE.

Our display walls blend modern design, practicality, and low impact materials.

Engineered in house from responsibly sourced materials, our display walls combine sleek design with structural integrity, offering a reliable and sustainable solution for any pop up environment.



KIT 2



1180mm (W) x 2200mm (H) 314mm (D)

KIT 3



1678mm (W) x 2200mm (H) 314mm (D)

KIT 4



2176mm (W) x 2200mm (H) 314mm (D)

CURVED OPTION AVAILABLE

LIGHT-WEIGHT & EASY TO TRANSPORT

KIT 5



2674mm (W) x 2200mm (H) 314mm (D)

CURVED OPTION AVAILABLE

KIT 5 CURVED



2674mm (W) x 2200mm (H) 314mm (D)

IDEAL FOR SHELL SCHEME EVENTS

KIT 6



3174mm (W) x 2200mm (H) 314mm (D)

CURVED OPTION AVAILABLE

KIT 7



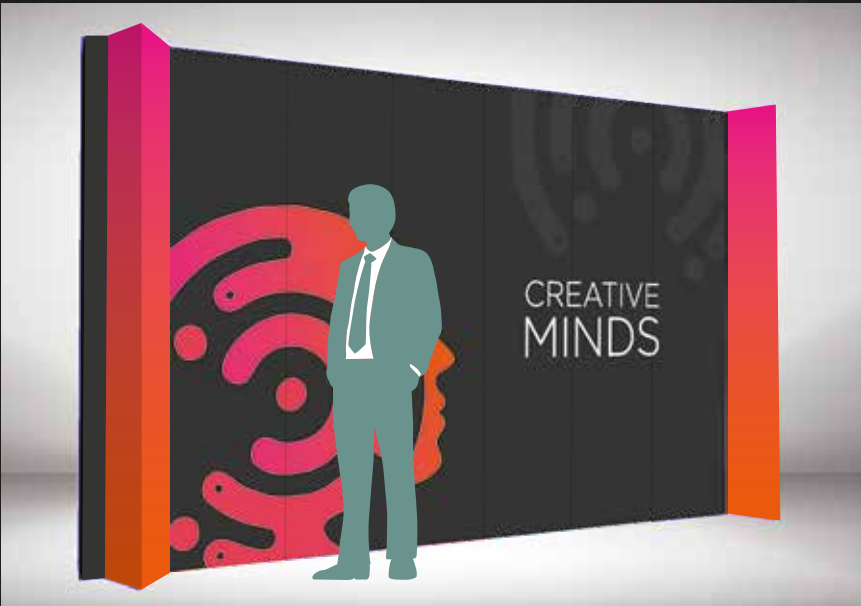
3172mm (W) x 2200mm (H) 530mm (D)

CURVED OPTION AVAILABLE

100%
RECYCLABLE

DISPLAY WALLS

KIT 8



3670mm (W) x 2200mm (H) 530mm (D)

CURVED OPTION AVAILABLE

KIT 9



4168mm (W) x 2200mm (H) 530mm (D)

CURVED OPTION AVAILABLE

USER
FRIENDLY
FOR EASY
INSTALL

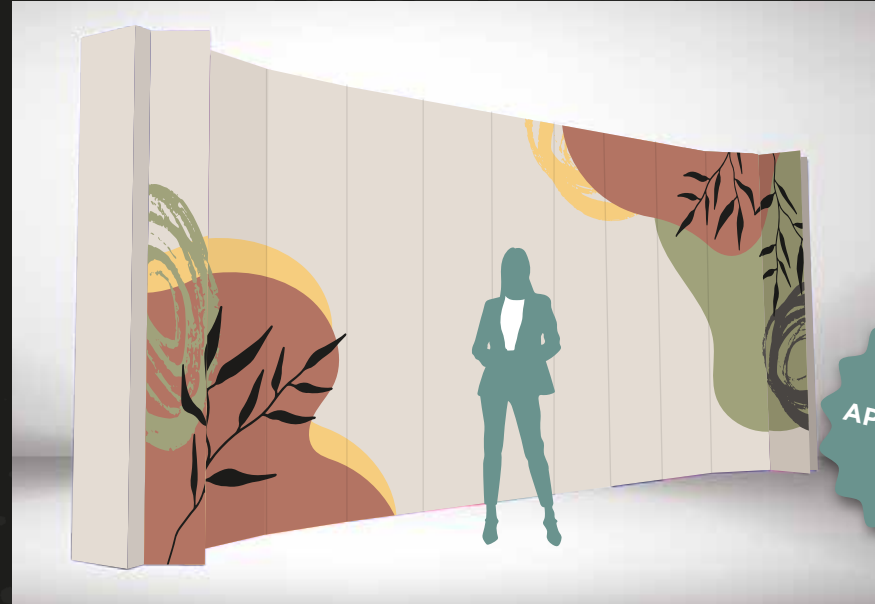
KIT 10



4666mm (W) x 2200mm (H) 530mm (D)

CURVED OPTION AVAILABLE

KIT 10 CURVED



4666mm (W) x 2200mm (H) 530mm (D)

VERSATILE APPLICATIONS

DISPLAY WALLS

KIT 10 ANGLED



4666mm (W) x 2200mm (H) 530mm (D)



FOLD IN TO PORTABLE CARRY CARTONS

*CARRY CARTONS ARE SOLD SEPARATELY. ALL WALLS WILL BE DELIVERED IN A STANDARD BOX.



BANNERSTANDS

**EFFORTLESS IMPACT,
WHEREVER YOU GO.**

Our cardboard Bannerstands are the ultimate grab-and-go, lightweight and compact branding tool. With all sides and the base as branding opportunities, this product offers strong visual impact with a small footprint.

Designed for quick set-ups and bold visuals, they bring your brand to life in seconds. Whether at pop-up events, or retail spaces, they deliver stand-out messaging with zero fuss and zero compromise on sustainability.



**4 STANDS
FIT INSIDE 1
CARTON!**

LARGE BANNERSTAND



SMALL : 600mm (W) x 1800mm (H) 330mm (D)
 MEDIUM : 700mm (W) x 1800mm (H) 330mm (D)
 LARGE : 800mm (W) x 1800mm (H) 330mm (D)

OPTIONAL EXTRAS

TAKE YOUR BANNERSTAND TO THE NEXT LEVEL.

Enhance your display with custom features such as headers, literature holders, shelves, or stand-off graphics for even greater impact.

Our Bannerstands offer the flexibility to be tailored with a range of optional extras and for larger, more eye-catching setups, multiple units can be seamlessly linked together. This adaptability makes them one of the most versatile portable solutions available ideal for dynamic environments and growing brands. Each stand can be customised to meet your exact needs, ensuring your brand not only shows up, but stands out.



**LINKED
BANNERSTAND**



**CURVED LINKED
BANNERSTAND**



**BANNERSTAND
WITH HEADER**

LARGE DISPLAY TRIANGLE



SMALL: 600mm (W) x 1800mm (H) 600mm (D)
 MEDIUM: 700mm (W) x 2000mm (H) 700mm (D)
 LARGE: 800mm (W) x 2200mm (H) 800mm (D)

DISPLAY TRIANGLES

OUR DISPLAY TRIANGLES ARE A GREAT SOLUTION TO FOCUS THE FLOW ON AN EVENT SPACE.

Lightweight, durable, and designed to maximise branding. Showcase multiple sponsors, share key information, or guide visitors in large, open spaces.

Crafted from recycled materials, our Display Triangles delivers strong visual impact whilst aligning supporting with your sustainability goals.



IDEAL FOR SPONSORSHIP ACTIVATIONS

DUMP BINS

OUR DUMP BINS ARE PERFECT PLACED IN HIGH-TRAFFIC AREAS TO DRAW ATTENTION.

Our dump bins encourage recycling while serving as lightweight, cost-conscious display units for bulk or promotional products. Made from durable cardboard, they're ideal for retail environments, promotions, long-term use, or as collection bins.

ANGLED TOP WITH HEADER



SMALL: 300mm (W) x 827mm (H) 300mm (D)
 MEDIUM: 400mm (W) x 1060mm (H) 400mm (D)
 LARGE: 430mm (W) x 1330mm (H) 430mm (D)

HEXAGONAL



SMALL: 300mm (W) x 800mm (H) 300mm (D)
 MEDIUM: 400mm (W) x 1060mm (H) 400mm (D)
 LARGE: 430mm (W) x 1330mm (H) 430mm (D)

ANGLED TOP WITH LID



IDEAL FOR VARIOUS RECYCLING & PRODUCT GIVEAWAYS

SMALL: 300mm (W) x 600mm (H) 300mm (D)
 MEDIUM: 400mm (W) x 800mm (H) 400mm (D)
 LARGE: 430mm (W) x 1030mm (H) 430mm (D)

FURNITURE

A STURDY & ENVIRONMENTALLY CONSCIOUS SOLUTION FOR EVENTS OF ALL KINDS.

Convenient, sustainable, and eye-catching solutions for seating, displays, or stand-out features. Each item is customisable with full-colour printing, logos, and creative shapes to match your event branding.

SEATING CUBE



500mm (W) x 500mm (H) 500mm (D)

CUSTOM DIMENSIONS AVAILABLE

POSEUR TABLE



500mm (W) x 1110mm (H) 500mm (D)

CUSTOM DIMENSIONS AVAILABLE

STOOL



360mm (W) x 1040mm (H) 440mm (D)

CUSTOM DIMENSIONS AVAILABLE

MADE FROM XANITA BOARD FOR EXTRA STRENGTH

TOOL FREE SETUP FOR QUICK AND EASY ASSEMBLY AND DISASSEMBLY.

Our furniture items are engineered to handle the demands of busy events and are strong enough to support heavy and repeated use.

DISPLAY COUNTER



682mm (W) x 1130mm (H) 414mm (D)
CUSTOM DIMENSIONS AVAILABLE

SEAT



460mm (W) x 880mm (H) 505mm (D)
CUSTOM DIMENSIONS AVAILABLE

LOW TABLE



750mm (W) x 800mm (H) 750mm (D)
CUSTOM DIMENSIONS AVAILABLE

FLAT PACKABLE & EASY TO ASSEMBLE

FREE STANDING DISPLAY UNITS (FSDUs)

COMBINING FUNCTIONALITY WITH IMPACTFUL VISUAL PRESENTATION AND QUICK ASSEMBLY.

Our FSDUs and literature dispensers are versatile and effective for showcasing products and sharing materials in retail, event, and corporate spaces.

PRODUCT DISPLAY



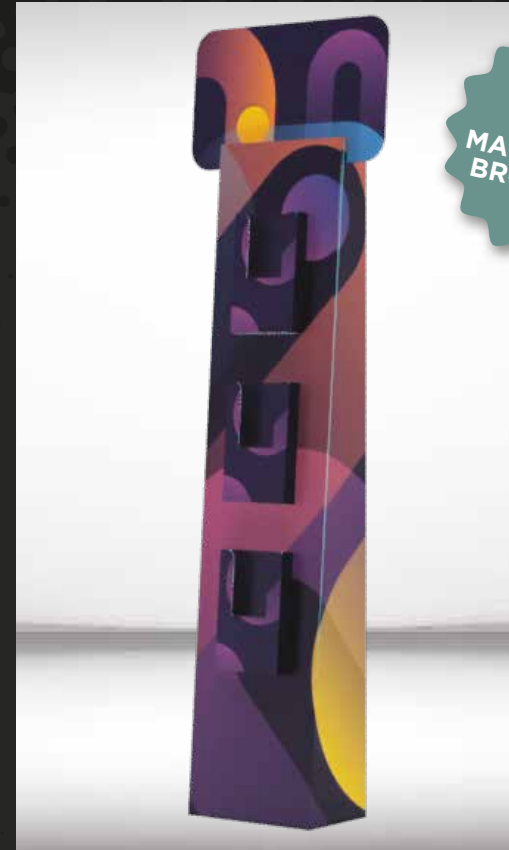
SMALL: 290mm (W) x 1325mm (H) 145mm (D)
MEDIUM: 340mm (W) x 1345mm (H) 325mm (D)
LARGE: 360mm (W) x 1700mm (H) 375mm (D)

ANGLED PRODUCT DISPLAY



470mm (W) x 1400mm (H) 235mm (D)
CUSTOM DIMENSIONS AVAILABLE

LITERATURE DISPENSER



PERFECT FOR MAGAZINES & BROCHURES

SINGLE SIDED: 414mm (W) x 1677mm (H) 220mm (D)
DOUBLE SIDED: 414mm (W) x 1667mm (H) 350mm (D)

POCKETS CAN BE CHANGED FOR A4 / A5 / DL SIZE

PROMOTIONAL UNITS

CUSTOMISABLE BRAND PROMOTION UNITS DESIGNED TO DISPLAY PRODUCTS, LAUNCHES, OR GIVEAWAYS IN HIGH-TRAFFIC AREAS SUCH AS RETAIL AISLES, LOBBIES, AND TRADE SHOWS.

STACKING TRIANGLES



SMALL: 300mm (W) x 300mm (H) 300mm (D)
 MEDIUM: 400mm (W) x 400mm (H) 400mm (D)
 LARGE: 500mm (W) x 500mm (H) 500mm (D)
 SIZES ARE PER TRIANGLE

STACKING CUBES



SMALL: 300mm (W) x 300mm (H) 300mm (D)
 MEDIUM: 400mm (W) x 400mm (H) 400mm (D)
 LARGE: 500mm (W) x 500mm (H) 500mm (D)
 SIZES ARE PER CUBE

DISPLAY PLINTHS



CUSTOM
 STACKING
 OPTIONS
 AVAILABLE

SMALL: 280mm (W) x 600mm (H) 280mm (D)
 MEDIUM: 280mm (W) x 800mm (H) 280mm (D)
 LARGE: 280mm (W) x 1000mm (H) 280mm (D)

COUNTER DISPLAY UNITS (CDUs)

THESE UNITS ARE FULLY CUSTOMISABLE IN SIZE, SHAPE, AND PRINTED DESIGN. THIS IS JUST THE START OF WHAT WE CAN DO. CHALLENGE US TODAY.

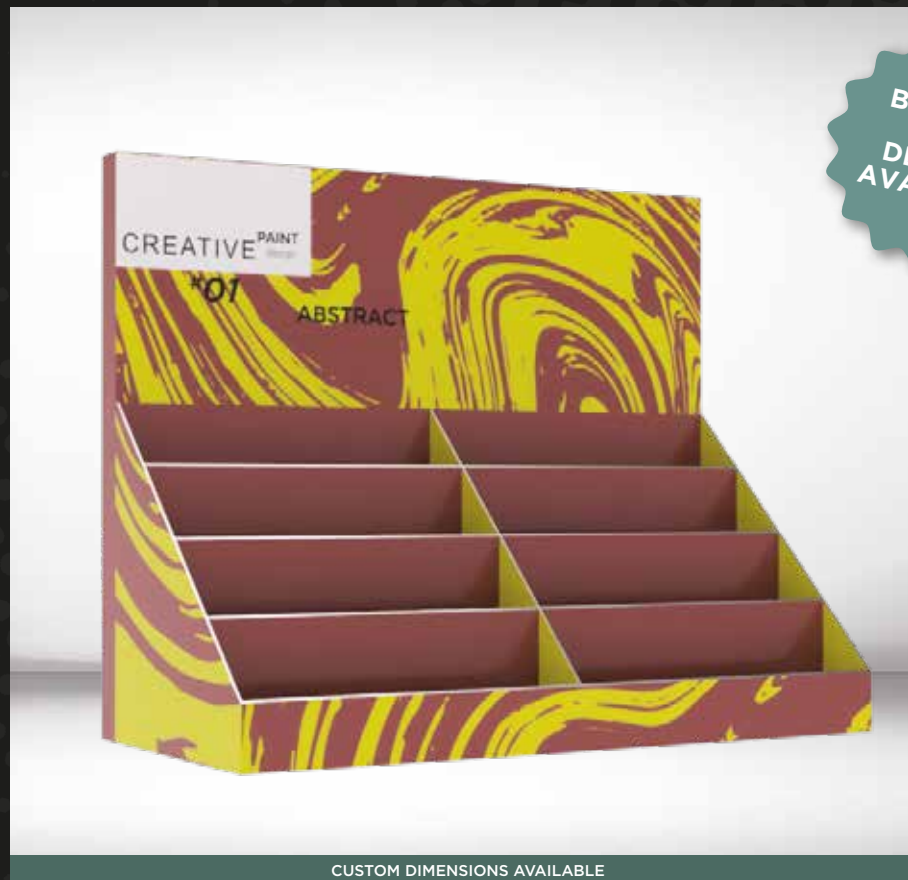
Our CDUs place your brand and products at eye level. Great at checkouts, reception areas on retail aisles. Made from sturdy cardboard, they're lightweight yet strong, ideal for showcasing small to medium items like snacks, cosmetics, or literature.

PRODUCT DISPLAY 1



CUSTOM DIMENSIONS AVAILABLE

PRODUCT DISPLAY 2



CUSTOM DIMENSIONS AVAILABLE

TENT CARD



A4: 297mm (W) x 210mm (H)
A5: 210mm (W) x 148mm (H)

STRUT CARD



A4: 297mm (W) x 210mm (H)
A5: 210mm (W) x 148mm (H)

PEN POT



95mm (W) x 102mm (H) 95mm (D)

DISPLAY CUBE



SMALL: 300mm (W) x 300mm (H) 300mm (D)
MEDIUM: 400mm (W) x 400mm (H) 400mm (D)
LARGE: 500mm (W) x 500mm (H) 500mm (D)

TRAY STYLE 1



150mm (W) x 60mm (H) 400mm (D)

TRAY STYLE 2



400mm (W) x 60mm (H) 400mm (D)

MAXIMUM
IMPACT IN A
SMALL FOOT-
PRINT

BESPOKE DESIGN SERVICES

**WHERE
IMAGINATION
MEETS IMPACT.**



**WE PARTNER WITH YOU TO BRING
YOUR DISPLAY IDEAS TO LIFE.**

Whether you need a small counter-top display unit (CDU), an eye-catching retail window, a conference setup, or a full exhibition stand, we've got the creative skills and expertise to make it happen.

From initial concept to final prototype, we work closely with you and our production experts to ensure your display is not only visually impressive but also practical, sustainable, and ready for large-scale manufacturing.

Tell us your vision and we'll handle the rest.

There's more, we offer professional installation services to make sure your display is precisely set up and ready to impress.



BLENDING
CREATIVITY,
PRECISION &
SUSTAINABLE
THINKING

OUR BADGES OF EXCELLENCE

WE'RE PROUD TO BE ACCREDITED



We've earned the EcoVadis Silver rating, placing us in the top 25% of companies worldwide for sustainability. This recognition reflects our strong commitment to environmental responsibility, ethical practices, fair labor, and sustainable sourcing driving us to continuously improve and create positive impact.



We're a certified carbon-reduced operation through CarbonQuota, reflecting our commitment to measuring and cutting our carbon emissions. This certification helps us reduce our environmental impact while supporting clients' sustainability goals and regulatory compliance.

WE'RE PROUD TO BE CERTIFIED



The international standard for occupational health and safety. This certification reflects our commitment to a safe working environment and gives our clients confidence that wellbeing is a top priority in every project.



Demonstrating our commitment to consistently delivering high-quality products and services. This internationally recognised standard ensures our processes are efficient, reliable, and focused on continuous improvement.



Reflecting our commitment to sustainable environmental management. This global standard drives us to continuously improve and innovate for a greener, more eco-conscious future.

WHAT OUR CUSTOMERS SAY ABOUT US



apetito

TOM BOND, SENIOR MARKETING EXECUTIVE

“I’ve worked with Colour Studios now for 2 years on numerous projects and I couldn’t be more impressed with them. We continuously put them under pressure with tight deadlines and they always manage to meet them whilst maintaining a high quality end product.

They are always friendly and willing to go the extra mile to help you achieve your goals, however crazy the brief is!”



*RHYS BLUMBERG,
CHIEF OPERATING OFFICER*

“We are delighted to be working with Colour Studios to integrate sustainable displays & events at Cardiff Arms Park. Seeking a responsible solution for our ever-changing requirements, Colour Studios proved to be the perfect choice.

Their commitment to sustainability, delivery of high standards, and their incorporation of user-friendly, efficient components makes us eager to continue our work together in the future.”

RNLI

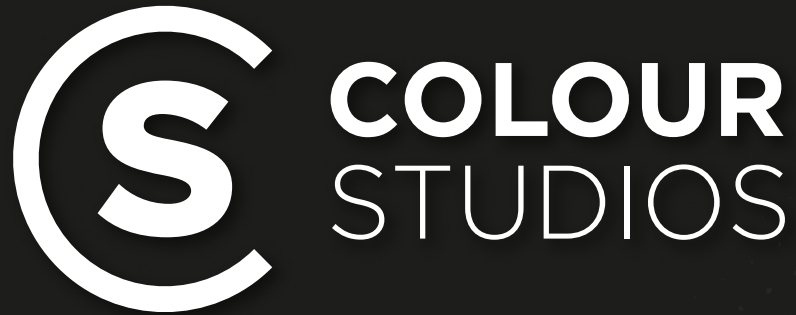
SINCE 1824

*LAURA SCOTT, NATIONAL VISUAL
MERCHANDISING MANAGER*

“I have been a client of Colour Studios for around the last 5 years, working with them across several different brands and projects. I have always found them to be extremely helpful and supportive in realising concepts, from the initial design process right through to the final result.


With the Colour Studios team I have realised some 3D designs from cardboard that I would never have thought possible ranging from full tradeshow stands to clothing display fixtures to shop floor signage and display equipment. The quality of their product is always exceptional and they will always be on hand to talk through any problems we encounter along the way.

Sustainability is really important to me, Colour Studios will always offer me a realistic, sustainable solution and never try to make sustainable claims about materials that aren’t, which I find very refreshing.”



CONTACT US



 TEL: 01761 431 300

 sales@colourstudios.co.uk


 www.colourstudios.co.uk

 UNIT 5
HAYDON TRADING ESTATE
RADSTOCK
BA3 3RD

 @colourstudiosuk

 @colourstudiosuk

 @Colour Studios

 @colourstudiosuk



COLOUR
STUDIOS

UNIT 5, HAYDON TRADING
ESTATE, RADSTOCK, BA3 3RD

TEL: 01761 431 300
sales@colourstudios.co.uk
www.colourstudios.co.uk